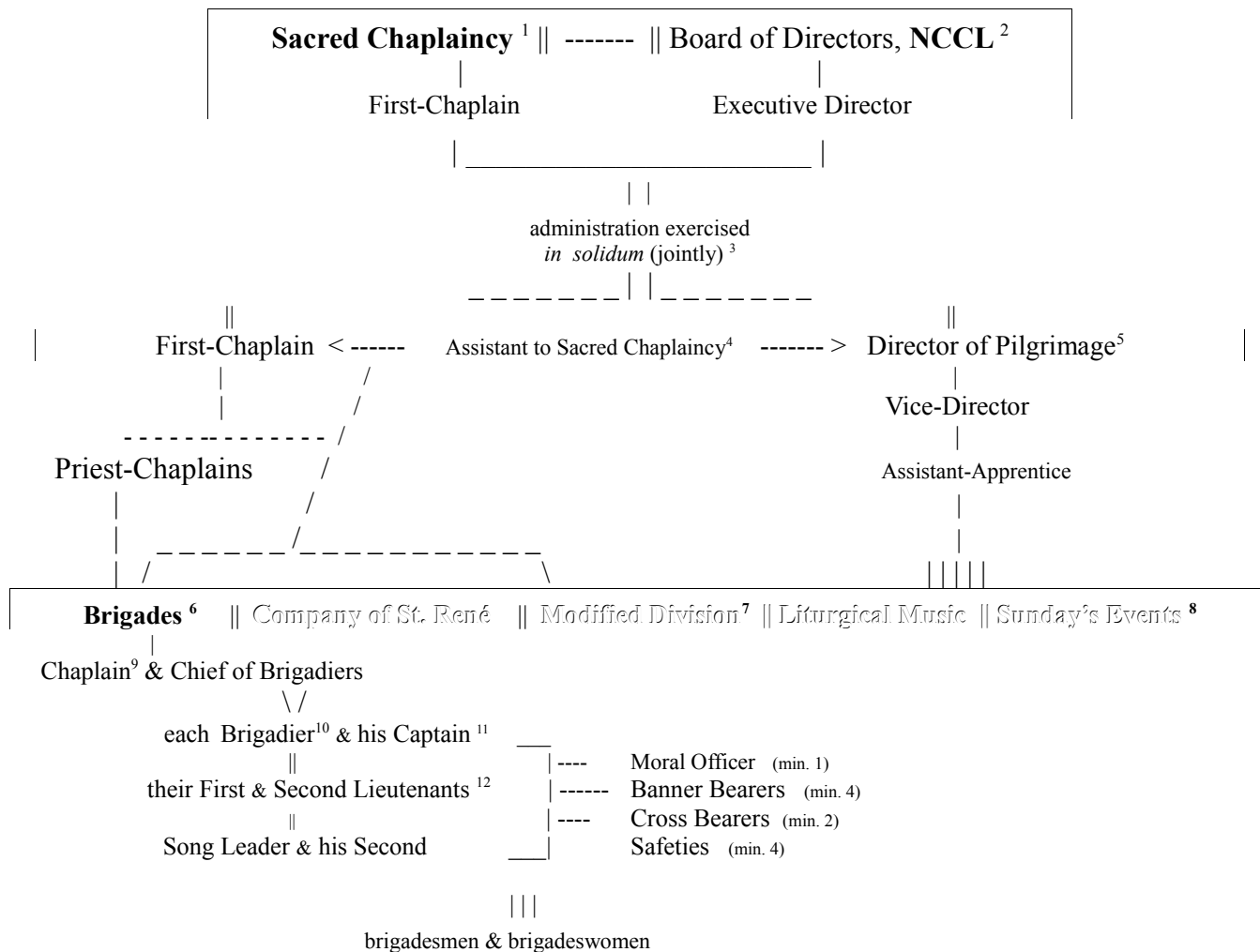


schematic of the organization of
Brigades
of the annual
Pilgrimage for Restoration



1 *Ex officio* it is the First-Chaplain of the Pilgrimage who heads or/and comprises the Sacred Chaplaincy.
2 The Executive Director, on behalf of the NCCL apostolate, founded the pilgrimage.
3 In the administration of the pilgrimage by the sacred Chaplaincy and the NCCL apostolate there are no civic legal ties between them, nor canonical. The sacred Clergy are and remain sovereign with regard to their respective ecclesial authority, and the bonds of charity prevail. The agreements between NCCL and the Clergy of the Chaplaincy are at once *ad hoc, pro bono, et ad edificationem ecclesiam*, with every due respect paid to the Clergy according to their sacred state as fathers and office as curates. The Chaplain can & does communicate with and/or direct any member of the organization at any level when & as he sees fit for the salvation of souls or/and good of the pilgrimage.
4 The Assistant to the Sacred Chaplaincy is the Director's liaison to the Chaplaincy. He also assists the Chaplain when called upon to communicate with the Priest-Chaplains in planning & in the field, and may also facilitate communication for them in the field with the Chief of Brigadiers and the Director of the Modified Division. The purpose is to allow the Clergy to concentrate on spiritual responsibilities.
5 *Ex officio*, this is the Executive Director of NCCL.
6 There are several brigades (on all days of) pilgrimage, each having the same basic structure. Some of the names of brigades, in (here, approximated!) chronological order of their formation: St. Joan of Arc, St. Isaac Jogues, Holy Family, Immaculate Heart of Mary, Ss. Ferdinand & Isabella, St. Joseph, Our Lady of LaSalette, Holy Seers of Fatima, St. Benedict, St. Michael the Archangel.
7 The Modified Division has its own brigade(s), which in planning and on the road are under the direction of the Chief of Brigadiers.
8 Sunday's Events Division also has its own, numerous veteran brigades, which likewise in planning and in the field are under the direction of the Chief.
9 The Chaplain of the brigades is *ex officio* the 'First Chaplain' of Pilgrimage; however, he may assign a delegate or delegates to this position. Like the Directorate and the Chaplaincy, the Chaplain of Brigades & the Chief of Brigadiers administer the brigades *in solidum*, 'jointly'.
10 **Each brigade is expected to plan with and (also optimally) to bring its own chaplain to pilgrimage.**
11 The captain (and so on down the ranks) substitutes for the brigadier when he is not present to the rest of the brigade on the road, in camp, at the divine Liturgy, etc. No officer leaves his brigade without the permission of his superior – and his knowledge *at the time of departure*. The brigadier informs his First Lieutenant *and* the Chief of Brigadiers when he must separate from the brigade for more than a moment. The same goes for the lower ranks, *mutatis mutandis*.
12 The reason for so much 'redundancy' in the ranks is easily summarized. First, on the road, pilgrims are falling in and falling out of the brigade continuously. But it is impossible to hold the brigade together with too few leaders. More importantly, year after year the same happens, with some officers not returning. The high number of officers allows for continuity from year to year in the field. **It is important to note, however, that 'once a brigadesman always a brigadesman' (or officer). IN OTHER WORDS, EVEN IF AN OFFICER DOES NOT RETURN, HE IS EXPECTED STILL TO PLAN, RECRUIT – EVEN REGISTER (*gratis*) – WITH HIS FELLOW BRIGADESMEN FOR THE PILGRIMAGE TO FOLLOW.**